

Berm Repair Kit Instructions

48-BRK - Small cuts & tears repaired using the temporary Peel & Stick Patches

1. Clean the area thoroughly and let dry.
2. Cut the repair material 2" wider than the damaged area.
3. Place the patch over the repair and apply pressure from the center, forcing any air or loose fabric out of the damaged area, and working outwards. Press down evenly throughout, ensuring the entire patch is applied.
4. Repeat on the other side of the berm. The patches should be on both sides of the damaged area to ensure repair and full containment.



48-BRK-STD - Repairs for yellow PVC berms using the Vinyl Adhesive

1. Clean the area thoroughly and let dry.
2. Cut the repair material in a circle, 2" wider than the damaged area.
3. Lightly sand the damaged area and repair material with sandpaper.
4. Liberally apply vinyl adhesive to damaged area and repair material.
5. Wait 2 minutes, then press the repair patch to the damaged area. Press down evenly.
6. The adhesive dries in about 2-5 minutes. Inspect the bond to ensure that the area is sealed on all edges.

Note: For maximum bond strength, allow 8 hours for cure time.

48-BRK-STD & Deluxe Repair Kits - Larger Repairs using the heat gun and repair fabric

1. Clean the area thoroughly and let dry.
2. Cut the repair fabric 2" wider than the damaged area.
3. Heat the damaged area with the heat gun on max setting.
4. Place the repair material on the damaged area and work from the center of repair patch outward, applying heat with heat gun and pressure with roller. When done properly, the coatings will be bonded together for a leakproof seal.
5. Repeat on the other side of the berm. The patches should be on both sides of the damaged area to ensure repair and full containment.

Deluxe Repair Kits - Berm Stay Removal and Replacement Procedures

1. If the damaged stay is still attached (welded) to the stay pocket, cut around the exterior of the weld to free the stay and remove.
2. Insert replacement stay up through the bottom of the sidewall pocket. Fold the stay outward and insert stay into skirt pocket as shown in Figure 1.
3. Inspect the replacement stay to ensure it is positioned properly in the pockets.

Note: Replacement stays do not have to be welded in place to perform properly.

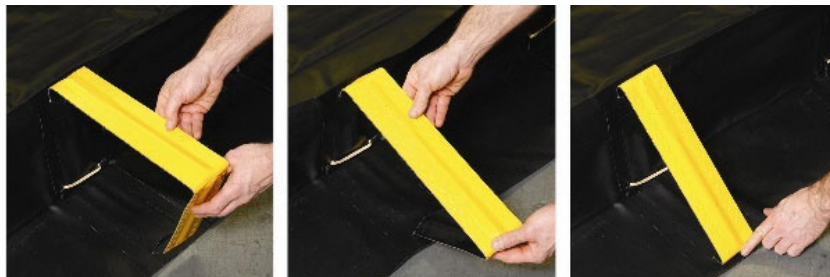


Figure 1